

# Forcing Bulbs



Forcing bulbs indoors is easy. Most bulbs that bloom indoors need a cold period to make them think they have gone through a winter, like outdoor bulbs do.

Though our paperwhite bulbs have already gone through the cooling process, Hyacinth bulbs require a 10-12 week cooling period prior to planting. Simply place bulbs in a paper bag in the crisper of the fridge, away from fruits and vegetables prior to planting.

If you have an extra refrigerator, pot Hyacinth up, and place pots directly into the fridge for the 10-12 week period.

## Planting

Choose your container and fill it with your choice of growing medium. Both bulbs will grow in standard potting mix or decorative gravel and sand. Bulbs should be nestled into the medium, with the top 2/3 of the bulb showing. (see info on bulb vases on next page).

## Hyacinths

If Hyacinths have not been cooled, place planted pots in fridge. Once 1" of green stem growth shows, take pots out of fridge and into a cool but bright spot until finished flowering. If they have been cooled before planting, once planted you can place pots in a cool but brightly lit spot for the bulbs to start growth. Once growth shows, place pots in a cool but bright spot until done flowering.

## Paperwhites

Once planted, place pots in a cool but brightly lit spot to start growth. Once flowers appear, move pots to a cooler location (15°C or so) for the duration of flowering (blooms last longer in cool spots).



**780-467-7557**

## Placement

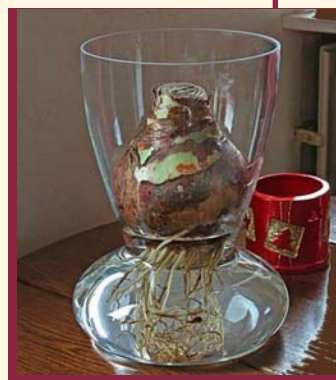
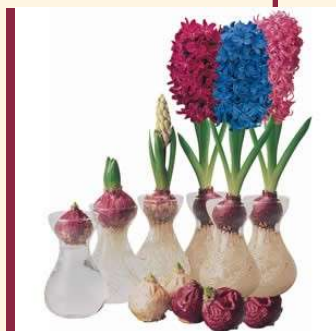
For a decorative touch you can also grow paperwhites in 'bulb vases'. These are vases with a narrow neck that the bulb can sit on top of.

Place your bulb in the vase (ensure Hyacinths have been cooled) and add enough water so that the level of the water is JUST below the bottom of the bulb. Roots will quickly fill the container as new growth emerges from the bulb.

Once bulbs have finished flowering, they are usually thrown out as they have used up most of their reserves.

## Neat Idea!

If paperwhites are grown in tall vases, the neck of the vase acts as a support for heavy stems. If grown in planters, you can support heavy paperwhite stems with branches and ribbon.



**780-467-7557**