

HARDY FRUITS FOR ALBERTA

APPLE

The most popular fruit for home gardeners. Provide a sunny site with well drained soil. Fertilize with a high phosphorous fertilizer such as liquid kelp, Turf Revolution Rose n' Bloom or Plant Prod 15-30-15. Many hardy choices, here are just a few of our favourites:



Norkent - This apple tree bears large fruit with a pleasant apple/pear taste similar to Golden Delicious. Very hardy. A natural semi-dwarf, fruit maturing late August and suitable for storage.

Ht: 15ft Sp: 10ft Zone 3



Harcourt - Green fruit washed with red. Excellent for eating, cooking, and storing. Mild pleasant flavour. Apple ripens early to mid September.

Ht: 15ft Sp: 12ft Zone 3



Haralson - Fruit is red over green, fair for eating good for cooking, excellent storage. Ripens late September - early October.

Ht: 15ft Sp: 12ft Zone 3



Goodland - Fruit is green washed with red. Good for cooking, eating and excellent for storing. Ripens late September.

Ht: 15ft Sp: 12ft Zone 3



Rescue

White flowers produce large reddish crabapples. Quite sweet and very heavy producing. Ripens in early August. Fruit size is 3.5cm.

Ht: 15ft Sp: 12ft Zone 3

HARDY FRUITS FOR ALBERTA



BLUEBERRY

Delicious blue berries on low growing shrubs. Ensure rich soil amended with plenty of compost and peat moss, and fertilize often with a high nitrogen fertilizer (30-10-10 or Aluminum Sulphate) to lower soil pH.

<http://www.blueberrycanada.com/>

North Country - This half highbush perennial blueberry has dark green foliage and compact growth. Fall foliage is beautiful scarlet red. The fruit is medium sized, with an appealing, sweet, "wild" blueberry flavour.

Ht: 2ft Sp: 2ft Zone 3

North Sky - an extremely hardy hybrid, forms a compact mound. Spectacular red fall color, produces good crops of sky blue fruit in mid-summer. Requires another blueberry of a different variety nearby to set fruit.

Ht: 36" Sp: 36" Zone 3

Northland - This small dark blueberry has a wild blueberry taste. Good ornamental use with blue green foliage and white flowers in spring. Cross pollinate with another Northland for higher yield. **Ht: 4ft Sp: 5ft Zone 3**

Polaris - Low, spreading variety with medium to large flavorful, blue berries. Ripens early in the season. Dense, glossy, dark green summer foliage turns deep red in fall. **Ht: 2ft Sp: 3ft Zone 3**

Pink Lemonade - This new variety of blueberry has pinkish white bell-shaped flowers. The fruits are pale greenish at first, then dappled pink and finally develop a deep pink color indicating a ripened fruit. In the fall the leaves turn a bright orange fading to deep red. **Ht: 3ft Sp: 3ft Zone 4**



HARDY FRUITS FOR ALBERTA

CHERRY

In recent years several hardy sour cherries have been released. Although they are termed 'sour' many are wonderful for fresh eating as well as baking.



Evans - A hardy bright red pie cherry that ripens late July but will sweeten on the tree until September. Strong flavour; good for jams, pies, baking or eating fresh. Self pollinating.

Ht: 12ft Sp: 9ft Zone 3



North Star - A dwarf sour cherry tree. Fruit is dark red when ripe: juicy and tender with good flavour. Ripens late July. Harvest within 2 weeks. Self pollinating. Ht: 10ft Sp: 8ft Zone 3



Carmine Jewel - A cross between a tart cherry and a Mongolian cherry. Fruit is dark red. Excellent used for fresh eating or cooking. Excellent in jams, jelly, juice, toppings and pie filling. **Ht: 6-8ft Sp: 6ft Zone 3**



Cupid - Early bloomer with the largest of all cherries, producing black to dark red, sweet, slightly astringent fruit in late summer and early fall. Excellent for fresh eating and processing. Self-pollinating. Ht: 4ft Sp: 4ft Zone 3

CURRENT

These extremely hardy shrubs produce tart fruit common in preserves and pies. They will consider a fair amount of neglect once established. Note: Gooseberry/Currant Sawfly can be a considerable pest; check undersides of plant leaves in late spring for eggs and destroy.

Red Lake - Clusters of fruit as red as rubies. Red currants are best known for wonderful jellies, but with their bright red colour they also make a beautiful addition to summer salads and drinks. Red lake is very productive and one of the best tasting red currants. Ht: 3-4ft Sp: 3-4ft Zone 2.



HONEYBERRY/HASKAP BLUE HONEYSUCKLE

Haskap is an amazingly hardy, high yielding berry bush that is relatively new to North America. They have an amazing shape that adds great ornamental value to the landscape.

It is an edible honeysuckle that originates from Siberia and can be found in Russia, China, and Japan. Recently, two selections have been developed at the University of Saskatchewan.

Tundra - In testing, Tundra's fruits were firm enough to withstand commercial harvesting and sorting at the University of Sask. yet tender enough to melt in the mouth. Ranks top for flavour and fruit size - at least 50% larger than other blue honeysuckles currently available in Canada. Taste is tangy sweet, won't bleed when picked, larger harvest than Borealis.

Borealis - Chosen as the top tasting selection at both U of S and amongst Japanese fruit producers. Medium production of short, boxy berries with a sweet tart taste. Better taste than Tundra, however fruit does bleed when picked; be gentle!

NOTE: Haskap require an unrelated variety for pollination. The two U of S selections do not pollinate each other well - choose a Russian variety for good pollination - Berry Blue or Blue Belle.

GRAPES

Grapevines not only provide fresh fruit for eating, juice or winemaking, but can also create thick privacy screens and add interest to garden walls. Grapes require well-drained soil and a warm, sunny spot. Provide a strong arbour or trellis for vines to adhere to; simple cedar trellising will not suffice. Note Grapes can be bothered by leafhopper; use applications of Hort Oil in fall or spring, and Doktor Doom Botanicals during the growing season.

Grape Varieties:

Beta: hardy and vigorous; high producer. Produces a blue/black grape that is perfect for jams, jellies & juices. Tart fruit.

Bluebell: deep blue. Good for eating, jelly & juice. Self-pollinating.

Frontenac: A hardy grape suitable for red wine. Self-pollinating.

Frontenac Gris: Similar to Frontenac but with light coloured skins. Suitable for making white wine.

Kay Gray: Originated in Minnesota. Small clusters of green grapes. Excellent for wine, jam and fresh eating.. Hardy to -40°C . Ripens in late September. Zone 3

Prairie Star: A sweet white grape with long clusters. It makes a wine with excellent body and good sugar/acid balance. Self-pollinating, Zone 3.

St. Pepin: Very sweet white. Good for eating and wine. Needs a pollinator.

Valiant: Originated in South Dakota; hardy to -40°C . Medium clusters with small blue berries. Excellent for jams, juices, eating and wine. Ripens in mid September. Zone 3



LOGANBERRY

A cross between the raspberry and blackberry. Has a sweet yet tart taste, produces in Aug-Sept. Prefers full sun, well drained soil. Leave them lots of space as you would with Raspberries. Harvest when closer to purple than red



RASPBERRY

One of the easiest fruits for home gardeners, raspberries require little care and will tolerate poor soils and light. To ensure strong canes, add bone meal to beds every fall/spring.

Floricane - bear fruit on second year wood, bear larger fruit in mid summer.

Primocane - includes newer hybrids. Bear fruit on first year wood—can be cut to ground in late fall/early spring, easy to maintain. Bear mid size fruit in later summer.

RED RIVER - A nice compact variety producing fruit on new wood, so can be cut to ground in late fall/spring. Mid size berries.
Ht: 3.5ft

DOUBLE DELIGHT - Unlike other varieties produces on new wood, so can be pruned right to the ground in late fall/early spring. Produces mid size berries with great flavour August to September.
Ht: 5ft

TAYBERRY

Patented in 1979 this is a cross between a loganberry and the black raspberry, developed in Scotland and named after the river Tay. Large fruit is tangy sweet and is produced in July-August. Can be damaged easily by hand, so take care when picking. Can be eaten fresh, preserved or used for wine.



STRAWBERRY

Two types:

Junebearing (short day) - produce large berries in mid summer, one crop. Kent

Everbearing (day neutral) - produce medium berries throughout summer. Tristar, Fern

Provide well drained soil, plant in rows about 8-10" apart, mulch rows with bark mulch or straw to keep fruit off ground. Prune off all runners that develop the first season so all the energy is focused into fruit production. If berry production starts to decrease top up beds with compost, or divide plants and replant.



Kent



Tristar



SASKATOON

Prairie favourites! Very hardy shrubs produce tasty purple berries great for eating fresh or preserving.

Smoky - Produces medium size clusters of large sweet berries. #1 choice for commercial production. Great choice for hedging, as this tends to sucker. Ht: 8ft



Northline - Large berries produced in long clusters are sweet. Great for hedging like Smoky, but slightly smaller. Ht: 5ft



Thiessen - Has perhaps the largest berries with great flavour. A more refined variety, Thiessen tends to sucker less. Ht: 8-10ft

PLUM

Our hardy selections are as delicious as store bought fruit. Ensure full sun and well drained soil is a must. Pollination can be tricky and will differ with each variety you grow. Zone 3

Mount Royal - This European plum is a semi-dwarf tree that is **self pollinating**. Mid season clingstone fruit has blue skin with yellow flesh. Plant in a sheltered location. **Ht: 15ft Sp: 12ft Zone 4**



Toka - Richly flavored red plum with beautiful apricot coloured flesh.
Great pollinator - plant 2 trees.
Ht: 15ft Sp: 6ft Zone 3



Brook Red - This plum features red fruit with bright orange colour. While the fruit can ripen by late August, quite often it doesn't properly mature until as late as early September. The flesh is firm and nicely sweet, but the skin can be a little on the sour side. These plums are great for eating, canning, jam, baking.

Pollinate with Western Sandcherry (Prunus besseyi)



Brook Gold - Early season fruit ripens to a rich gold colour mid August, with juicy sweet flesh that has a yellow tone. These plums are very tasty and mainly used off the tree. Considered poor for jam and canning. **Cross pollinate with Western Sandcherry (Prunus bessayi) for best results.**





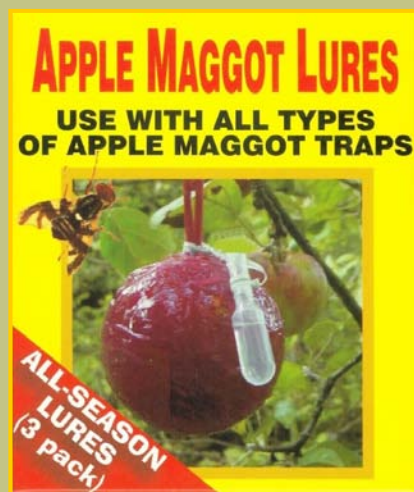
CONTROLLING APPLE MAGGOT

One of the most troublesome apple pests in the last few years has been the apple maggot. This pest causes winding brown trails in apple flesh, causing so much damage that the fruit is not edible.

The mature larvae overwinter in our soil, and at this time of year they pupate into the adult Apple Maggot, known as a Fruit Fly. The fly looks similar to a house fly with distinctive black bands on their wings. The female flies puncture the fruit, then insert eggs just below the skin.



The eggs hatch into maggots which leave tunnels/trails in the flesh of the fruit as they feed. Many gardeners who have older apple trees notice the damage to be more severe than on the newer varieties of trees. Here are some suggestions to help prevent damage to your apples.



It is important to start control early. In mid May hang apple maggot traps in trees to lure and trap adults. (Adults traditionally emerge from the ground in Alberta around May 25th).

These plastic traps resemble an actual apple and contain a lure which acts as an attractant to the damaging fly, and a sticky substance that you cover the artificial apple with. By hanging traps early you are trapping adults that would otherwise lay eggs in fruit.

Traps should be checked from mid-June to harvest; 2 or 3 times a week. If traps are full of insects, you may have to re-apply glue. The idea is to catch as many adults as possible before the fruit is formed. Egg laying activity begins in July and carries on until August. Note that if you have neighbours who also have apple maggot, they need to use the traps.

When fruit begins to ripen in late summer and fall, ensure ALL fallen fruit is picked up daily until no fruit remains. In late fall place Remy cloth on the soil under the tree. This can help prevent adults from emerging from the soil next spring.

RUSSET ON APPLE

Symptoms:

- Rough, leathery streaks or patches on apples - may cover just top or entire apple.

This is not a disease at all - though the skin appears marred, Russet is actually a characteristic trait of several tasty apple varieties. Many Russet varieties have been removed from the commercial market because of the skin, yet are great tasting!



APPLE SCAB

Symptoms:

- Lesions on leaves, scab on fruit.

Life Cycle:

- Spores overwinter in leaf debris, in early spring as tree emerges from dormancy spores attack foliage.
- Lesions appear 10-28 days after infection.

Cultural Control:

- Thorough leaf litter cleanup in fall.

Chemical Control:

- Apply copper spray at 10 day intervals as trees begin to break dormancy in spring.



SASKATOON SAWFLY

Symptoms:

- Small scars on upper part of green berries. Larger fruit may have holes. Later in season fruit may appear as empty black shells.

Life Cycle:

- Adults emerge in May, lay eggs on flowers. Eggs hatch, larvae emerge and feed on fruit.
- In late June, larvae drop to ground and overwinter in soil.

Cultural Control:

- Look for adult sawflies when blooms emerge; handpick.



CHERRY FRUIT FLY

Plants affected: Cherry

Symptoms:

Larvae (maggots) feed in the flesh near the pit of cherries rendering them inedible.

Life Cycle:

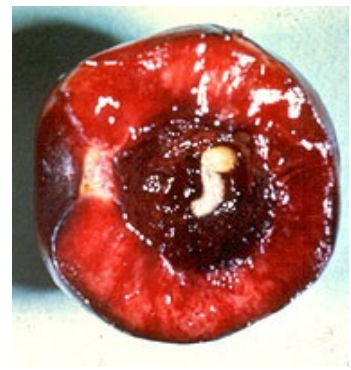
- Overwinter as pupae in soil under trees. Five to 9 days after emerging, adult female flies lay eggs singly in cherries.
- Larvae feed for 1-2 weeks then cut exit hole and drop to ground to pupate.
- Adults are present from June through August, generally peaking close to harvest. Flies are weak and will usually not travel farther than the first cherry tree they find.

Cultural Control:

Hang yellow sticky traps in late May in trees to monitor fly emergence (for spraying date) and to trap adults.

Chemical Control:

Sevin. Apply first spray no later than 6 days after capture of the first fly (on traps) followed by sprays at recommended intervals.



GOOSEBERRY SAWFLY

Plants affected:

- Red and White Currants (not black), Gooseberry

Symptoms:

- Leaves stripped from branches; fruit is not affected.

Life Cycle:

- Female lays eggs on underside of leaf close to ground; young larvae make holes in leaves, as they mature damage becomes more severe; leaves are entirely stripped from shrub.
- Overwinter in soil as a cocoon.

Cultural Control:

- Examine leaves in May; look for white eggs low down in center of the bush, remove leaves.
- Clear away debris and mulch in the fall, and disturb the soil in spring so birds will find them.

Chemical Control:

- Not recommended once larvae seen; try to destroy eggs early on.



SOURCES:

Cherries/Haskap/Saskatoon

fruit.usask.ca

haskap.ca

Grapes:

cornhillnursery.com

grapes.umn.edu

Fruit and Berry Gardening Canada - Lone Pine Publishing



greenlandgarden.com

780-467-7557